

# Roadway Departure Workshop

Organised by

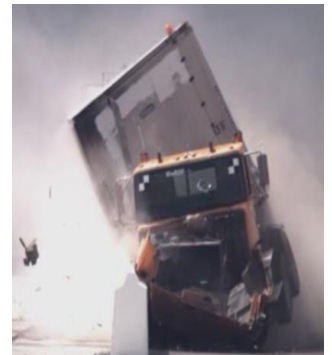
Transport and Road Safety (TARS) Research, UNSW  
Centre For Automotive Safety, University of Adelaide  
Australasian College of Road Safety

This workshop focuses on roadway departures and how to prevent them and reduce their severity when they do occur. Information will be provided concerning the most recent updates to the testing standards for roadside safety hardware that are adopted in Australia and the USA: revisions to the Australian AS/NZS 3845 Road Safety Barrier Systems and Devices (Parts 1 and 2) and the new USA MASH (Manual for Assessing Safety Hardware) standard. The material will be presented by the USA's and Australia's leading experts on roadway departure, road safety barrier systems and roadside furniture crashworthiness, namely Dick Albin, Frank Julian, Prof. Rod Troutbeck, Dr. Jeremy Woolley and Prof. Raphael Grzebieta.



## Workshop topics and features

- Learn about preventing and mitigating roadway departures
- Learn about current philosophy in Australia and the USA regarding safer roadways
- Become informed about the revision of Australian Standard AS/NZS 3845 Road Safety Barrier Systems and Devices (both parts 1 and 2)
- Become informed about the US Manual for Assessing Safety Hardware (MASH), which underpins the Australian standard
- Hear from world-leading road barrier and hardware US and Australian experts
- Network with roadside hardware experts, manufacturers and distributors.
- Enjoy lunch, morning and afternoon breaks at the Exhibitors Hardware area.



## Who should attend

Professionals and practitioners who work or are interested in the area of road design and safety hardware. The Workshop will cater for all levels of experience and should appeal to the following groups:

- |                                      |                        |
|--------------------------------------|------------------------|
| • Road and Traffic Engineers         | • Road Safety Auditors |
| • Transport Agency Regulators        | • Consultants          |
| • Local Government employees         | • Engineers            |
| • Barrier Manufacturers/Distributors | • Researchers          |
| • Road Maintenance Contractors       | • Students             |



**National Wine Centre of Australia, Adelaide**  
**5-6 November, 2013**

Supported by AITPM



The workshop is kindly sponsored by

**Boylan Group - Ingal Civil Products - LB Australia - Saferoads Australia - HSRoads**

## TOPICS COVERED OVER THE TWO DAYS

### General Concepts

- Introduction to Roadway Departure
- Australian and US philosophies to Safer Roadways
- Rethinking the balance between clear zones and barriers in Australia
- Countermeasures to keep vehicles on roadways (Friction Treatment and Safety Edge)
- Motorcycle into barrier impacts and implications
- Computer simulation of barrier impacts and Verification and Validation Process

### Barriers and Standards

- Introduction to barriers
- Cable barrier & semi-rigid barriers
- Rigid Barriers
- Bridge rails and transitions
- USA MASH crash-test guidelines explained
- AS/NZ 3845 Road Side Safety Systems and Devices –Parts 1 & 2 – revisions explained.

## KEYNOTE SPEAKERS

<b>Dick Albin:</b>	Roadside safety expert with over 26 years of experience in the USA. Chairman of Transportation Research Board committee on Roadside Safety Design (AFB20).
<b>Frank Julian</b>	Roadside safety expert with over 25 years of experience in the USA with a focus on developing and deploying countermeasures for roadway departure crashes.
<b>Rod Troutbeck</b>	Australian road barrier safety expert with over 35 years of experience in Traffic and Transport Engineering and Chair AS/NZS 3845 Barrier Standards Committee.
<b>Raphael Grzebieta</b>	Road safety and road safety barrier research expert with over 28 years of experience in Australia. Professor of Road Safety at TARS Research UNSW.
<b>Jeremy Woolley</b>	Senior Research Fellow and expert in road design, infrastructure, and road safety audit at the Centre for Automotive Safety Research, The University of Adelaide.

## REGISTRATION FEE (INCLUDING GST)

Early Bird (Until October 16)	\$350
Standard	\$400
If registered for both ACRS Conference and workshop	\$300

Benefits from workshop registration:

- (a) discounted hotel room rates from the 2013 ACRS Conference Website (<http://conference.acrs.org.au/index/travel>)
- (b) registration for 2013 ACRS Conference at early-bird rate at all times (<http://conference.acrs.org.au/page/display/id/19>)



**Payment Information (Fax to: +61 2 93856040; or email to: [mario.mongiardini@unsw.edu.au](mailto:mario.mongiardini@unsw.edu.au))**

[Online payment](#)

[UNSW Online Payment – Roadway Departure Workshop](#)

Card Type:  Visa  Mastercard

Cardholder Name: \_\_\_\_\_

Credit Card

Card Number: \_\_\_\_ - \_\_\_\_ - \_\_\_\_ - \_\_\_\_ Expiration: \_\_ / \_\_ CVV: \_\_\_\_

Amount: \$ \_\_\_\_ Signature: \_\_\_\_\_

Email (for receipt): \_\_\_\_\_

Supported by AITPM

I wish to also register for the ACRS conference at earlybird rates



Enquiries: [mario.mongiardini@unsw.edu.au](mailto:mario.mongiardini@unsw.edu.au)

Phone: +61 2 93854452; Fax: +61 2 93856040

### WORSHOP SPONSORS

